

PRODUCT DATA SHEET No 0021/51/23/25/26/31/22

Product name: **ZCLF flush- mounted flexible fitting, ZCL UV flexible fitting, ZPS rigid fitting, ZK rigid elbows, UZ lockable handle, UZuv**

Manufacturer: **ELEKTROPLAST SP. Z O.O 32-431 STRÓŻA 1015**

Reference documents:	PN-EN61386-1:2011/A1:2019 ; PN-EN61386-25:2012 ; NZ EL-PL 004/4/2015 ; NZ EL-PL 005/4/2015 PN-EN13501-1:2019 ; LVD Directive 2014/35/EU ; Directive 2011/65/EU
Intended use:	Flexible fitting ZCLF ; ZCL UV, rigid fitting ZPS; rigid elbows ZK; lockable handle UZ; UZuv are intended for connecting and fixing pipes RL, RS in a straight line and at an angle in electrical installations inside and outside buildings, of a specified reaction to fire class.
Product characteristics:	<ul style="list-style-type: none"> • <u>Flush-mounted flexible fitting - ZCLF - flammable</u> • Material: PP • Design: flexible • Fire response: F • <u>Non-resistance to UV radiation</u> • Colour white, grey, black • <u>Flexible fitting - ZCL UV - self-extinguishing</u> • Material: PP flame retardant • Design: flexible • Reaction to fire: B-s3, d1 • <u>UV-resistant for temperate climates</u> • Colour white, grey, black • <u>Rigid fitting - ZPS - self-extinguishing</u> • Material: Rigid PVC • Design: rigid • Reaction to fire: B-s2, d0 • <u>UV-resistant for temperate climates</u> • Colour white, grey, black • <u>Rigid elbows ZK (90°)-self-extinguishing</u> • Material: Rigid PVC • Type: rigid one- and double-socket, ZKz return (180°) • Reaction to fire: B-s2, d0 • <u>UV-resistant for temperate climates</u> • Colour white, grey, black • <u>UZ, UZuv flammable handle</u> • Material: PP • Design: lockable • Fire response: F • Non-resistance to UV radiation • <u>UZuv-resistant for temperate climates</u> • Colour white, grey, black
Compression resistance ZK, ZKz, ZPS	750N
Lateral load resistance - UZ, UZuv, impact resistance - UZ, UZuv.	Medium - (1-16 kg) Large 2 kg.
Chemical resistance: ZK, ZKz, ZPS	Resistant to alcohols, aromatic-free petrol, glycol, hydrochloric acid (100% at 60°C) , nitric acid (10% at 60°C), sulphuric acid (96% at 20°C), diesel fuel at 20°C, hydrogen sulphide at 60°C.
Chemical resistance: ZCLF, ZCL UV, UZ, UZuv	Petrol, glycol, paraffin, diesel, silicone oil, transformer oil, acids (sulphuric 98%, hydrochloric 36%), lyes (potassium 50%, sodium 50%)
Temperature range:(transport, installation, operation)	ZCLF, (-15°C)to(+60°C),ZCL UV, ZK, ZPS,UZ, UZuv(-25°C)to (+60°C),
External diameters [mm]:	ZCLF, ZCL UV, UZ, UZuv: 13,16,18,20,22,25,28,32,37,47 ZK, ZPS : 16,18,20,22,25,28,32,37,47 ZKz : 28,32,37,47

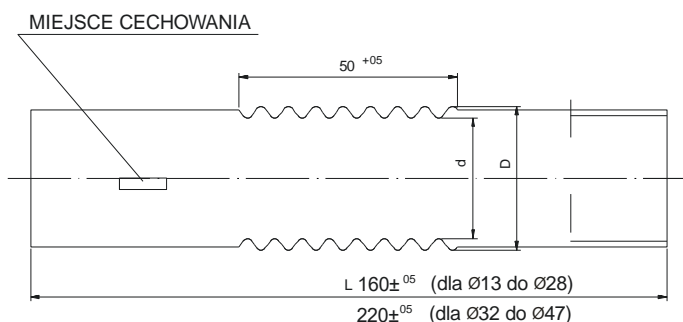
ZCLF				
	WHITE	GREY	BLACK	
Ø ext.	Catalogue no.	Catalogue no.	Catalogue no.	Number of pcs./package.
13	08.1	08.2	08.2A	100
16	08.3	08.4	08.4A	100
18	08.5	08.6	08.6A	100
20	08.7	08.8	08.8A	100
22	08.9	08.10	08.10A	100
25	08.10B	08.10C	08.10D	100
28	08.11	08.12	08.12A	100
32	08.12B	08.12C	08.12D	50
37	08.13	08.14	08.14A	50
47	08.15	08.16	08.17	50
ZCL UV				
	WHITE	GREY	BLACK	
Ø ext.	Catalogue no.	Catalogue no.	Catalogue no.	Number of pcs./package.
13	08.25	08.26	08.27	50
16	08.28	08.28	08.30	50
18	08.31	08.32	08.33	50
20	08.34	08.35	08.36	50
22	08.37	08.38	08.39	50
25	08.40	08.41	08.42	50
28	08.43	08.44	08.45	50
32	08.46	08.47	08.48	50
37	08.49	08.50	08.51	50
47	08.52	08.53	08.54	50



Fig. 1,2,3 ZCL and ZCL UV fitting - white, grey, black

ZCLF, ZCL UV flexible fittings (dimensions in mm) [miejsce cechowania – stamping place]

Ø ext.	Fitting length L (total)	Ø ext.	Fitting length L (total)
13	160±5	25	165 ±5
16	160±5	28	160±5
18	160±5	32	165±5
20	160±5	37	192±5
22	160±5	47	220±5



ZPS				
	WHITE	GREY	BLACK	
Ø ext.	Catalogue no.	Catalogue no.	Catalogue no.	Number of pcs./package.
16	010.1	010.2	010.2A	10
18	010.3	010.4	010.4A	10
20	010.5	010.6	010.6A	10
22	010.7	010.8	010.8A	10
25	010.8B	010.8C	010.8D	10
28	010.9	010.10	010.10A	10
32	010.10B	010.10C	010.10D	10
37	010.11	010.12	010.12A	10
47	010.13	010.14	010.15	10

ZPS rigid fittings (dimensions in mm)

Ø ext.	Fitting length	Ø ext.	Fitting length
		25	60
16	40	28	70
18	46	32	75
20	50	37	80
22	50	47	90



Fig. 4,5,6 ZPS rigid fitting white, grey, black

ZK injection double-socket fittings				
	WHITE	GREY	BLACK	
Ø ext.	Catalogue no.	Catalogue no.	Catalogue no.	Number of pcs./package.
16	09.30	09.31	09.31A	10
18	09.32	09.33	09.33A	10
20	09.34	09.35	09.35A	10
22	09.36	09.37	09.36A	10
25	09.37A	9.37B	9.37C	10
28	09.38	09.39	09.39A	10
32	09.39B	09.39C	09.39D	10
37	09.40	09.41	09.41A	10
47	09.42	09.43	09.44	10



Fig. 7,8,9 Elbow ZK two-flange injection white, grey, black

ZK double-socket (hot-bent)				
	WHITE	GREY	BLACK	
Ø ext.	Catalogue no.	Catalogue no.	Catalogue no.	Number of pcs./package.
16	09.1	09.2	09.2A	10
18	09.3	09.4	09.4A	10
20	09.5	09.6	09.6A	10
22	09.7	09.8	09.7A	10
25	09.8A	09.8B	09.8C	10
28	09.9	09.10	09.10A	10
32	09.11	09.12	09.12A	10
37	09.13	09.14	09.14A	10
47	09.19	09.20	09.21	10



Fig. 10,11,12 ZK double-socket (hot-bent) white, grey, black

ZK single-socket (hot-bent)				
	WHITE	GREY		
Ø ext.	Catalogue no.	Catalogue no.		Number of pcs./package.
16	09.50	09.51		10
18	09.52	09.53		10
20	09.54	09.55		10
22	09.56	09.57		10
25	09.57A	09.57B		10
28	09.58	09.59		10
32	09.60	09.61		10
37	09.62	09.63		10
47	09.68	09.69		10



Fig. 13,14 ZK single-socket white, grey (hot bent)

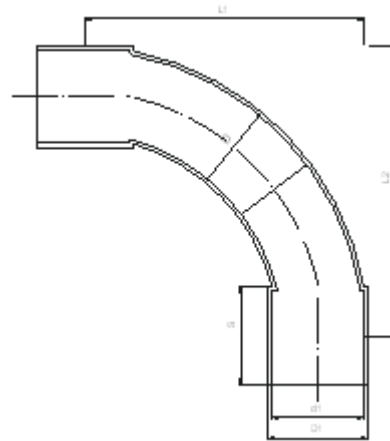
ZKz single-socket return (180°) (hot-bent)				
	WHITE		BLACK	
Ø ext.	Catalogue no.	Ø ext.	Catalogue no.	Number of pcs./package.
28	09.80	28	09.86	10
32	09.81	32	09.87	10
37	09.82	37	09.88	10
47	09.83	47	09.89	10



Fig. 15,16 ZKz single-socket return - white and black (hot bent)

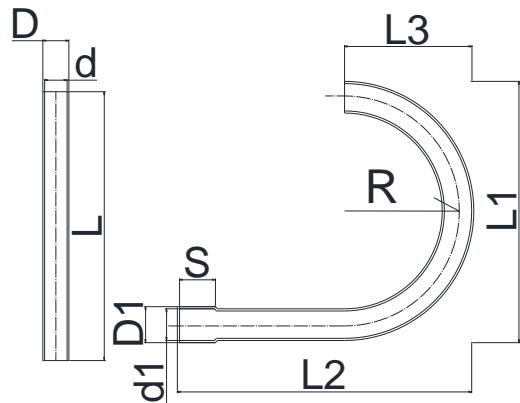
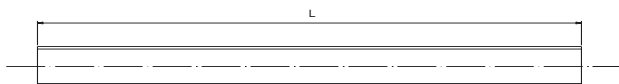
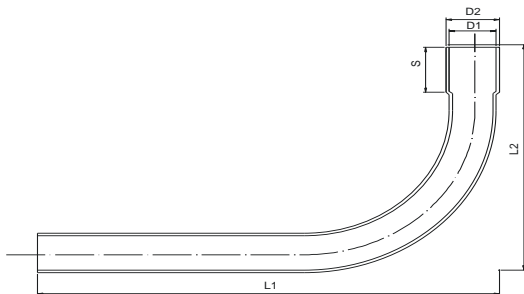
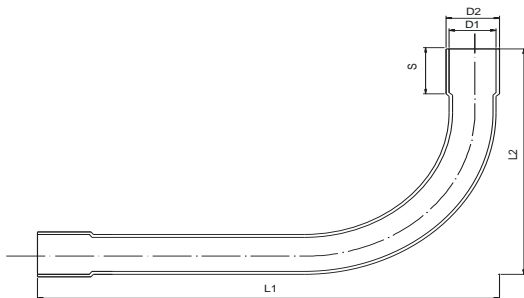
ZK rigid fittings - injection double -socket (dimensions in mm)

Internal Ø (d1)	L ₁ =L ₂ tol.0(±0,06)	S 0 _{tol.} (±0,07)	Bending radius "R"
16	40	17,5	44
18	65	18,7	49
20	77	24,2	57
22	58,4	22,9	60
25	82,3	25	61
28	100	27,8	97
32	130	32,1	100
37	98,25	38,5	101
47	124,8	49	128



ZK, ZKz made of PVC for RL and RS hot-moulded (dimensions in mm)

Elbow - ZK (90°) double - socket elbow Elbow ZK (90°) single-socket					Elbow - ZKz(180°) single-socket return elbow					
Internal Ø (D1)	L ₁	L ₂	S 0 _{tol.} (±0,07)	Bending radius "R"	Internal Ø (D1)	L ₁	L ₂	L ₃	S 0 _{tol.} (±0,07)	Bending radius "R"
16	190	120	32	44	28	210	230	107	35	90
18	190	120	35	49	32					
20	190	125	35	57	37	230	260	117	37	96
22	190	140	35	60	47	244	280	150	43	97
25	220	140	35	61						
28	210	145	38	97						
32	240	140	38	100						
37	220	160	38	101						
47	260	200	45	128						



UZ, UZuv lockable handles (dimensions in mm)

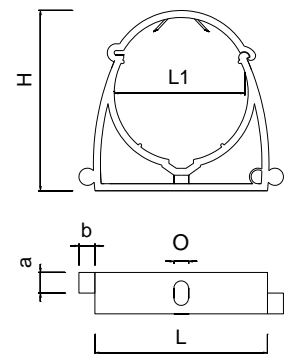
Pipe handle	Catalogue number UZ			Catalogue number UZ UV			Number of pcs/point
	White	Grey	Black	White	Grey	Black	
L ₁ 13	07.1	07.2	07.2A	07.25	07.26	07.27	100
L ₁ 16	07.3	07.4	07.4A	07.28	07.29	07.30	100
L ₁ 18	07.5	07.6	07.6A	07.31	07.32	07.33	100
L ₁ 20	07.7	07.8	07.8A	07.34	07.35	07.36	100
L ₁ 22	07.9	07.10	07.10A	07.37	07.38	07.39	100
L ₁ 25	07.10B	07.10C	07.10D	07.39A	07.39B	07.39C	100
L ₁ 28	07.11	07.12	07.12A	07.40	07.41	07.42	100
L ₁ 32	07.12B	07.12C	07.12D	07.42A	07.42B	07.42C	100
L ₁ 37	07.13	07.14	07.14A	07.43	07.44	07.45	100
L ₁ 47	07.15	07.16	07.17	07.46	07.47	07.48	100

Manufacturer recommendations:
 The manufacturer recommends the spacing of the lockable handles for the RL pipe:
 horizontal: 60÷70 cm, vertical: 80÷90 cm.
 for RS pipe: horizontally: 80÷90 cm,



Fig. 17 UZ black, white, grey

Lockable handle	H	L	L ₁	Ø
13	26,7 ^{±02}	24	13,3 ^{±02}	4,1
16	29 ^{±02}	26	16,3 ^{±02}	4,1
18	32 ^{±02}	28	18,4 ^{±02}	4,2
20	35 ^{±02}	32	20,4 ^{±02}	4,8
22	35,5 ^{±02}	33	22,5 ^{±02}	5
25	38,9 ^{±02}	35	25,2 ^{±02}	5,3
28	43,7 ^{±02}	40	28,5 ^{±02}	5
32	45,9 ^{±02}	41,3	32,2 ^{±02}	5,6
37	55,2 ^{±02}	50,3	37,5 ^{±02}	6
47	66,5 ^{±02}	62,5	47,5 ^{±02}	6



The above information is based on the current state of knowledge and applies to the product as manufactured by the manufacturer: Elektroplast Spółka z ograniczoną odpowiedzialnością.

In the case of use of the product for purposes other than those stated by the manufacturer, the responsibility for the safety, duration and quality of use of the products falls on the user. **The product data sheet was prepared by: Stanisław Klakla - Production Director**

ELEKTROPLAST
 Spółka z ograniczoną odpowiedzialnością
 DYREKTOR PRODUKCJI

Stanisław Klakla